



Pap Smears – Medical Director 3

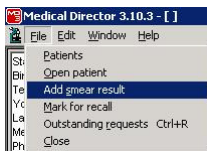
Pap smear results require some additional steps to be correctly imported into Medical Director.

Please see below for the basic steps:

1. Make sure that no patient record is open and from the **Investigations** menu select **Check Holding File...** (Shortcut F5).
2. Select the doctor and click **OK** to view imported results in the holding file.
3. Select one of the listed patients by clicking once on the patient's name. Click **View**.

Record the Pap smear result and set the recall

1. With the results window open click on **File** and select **Add smear result**.

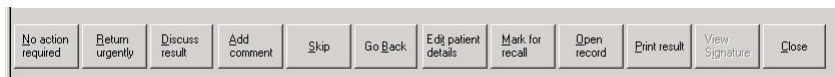


2. Select the appropriate **Result** and add comments as required.

3. Select **Recall** and accept the default of PAP SMEAR with an interval of 2 years. Click **Save** to add a recall (for 2 years time) for this patient to your Medical Director recall/reminder system.

4. Click **Add** to record the smear in the patient's Pap Smear results.

5. You now need to complete importation of the results by selecting the appropriate action based on the results. E.g if the results are normal you would generally select **No action required**.



6. You can now process the next result in the Holding File or click on **Close** to exit.